

***SnoJet***

DIVISION OF CONROY OF CANADA INC.

**1974  
THUNDER JET**

# INDEX



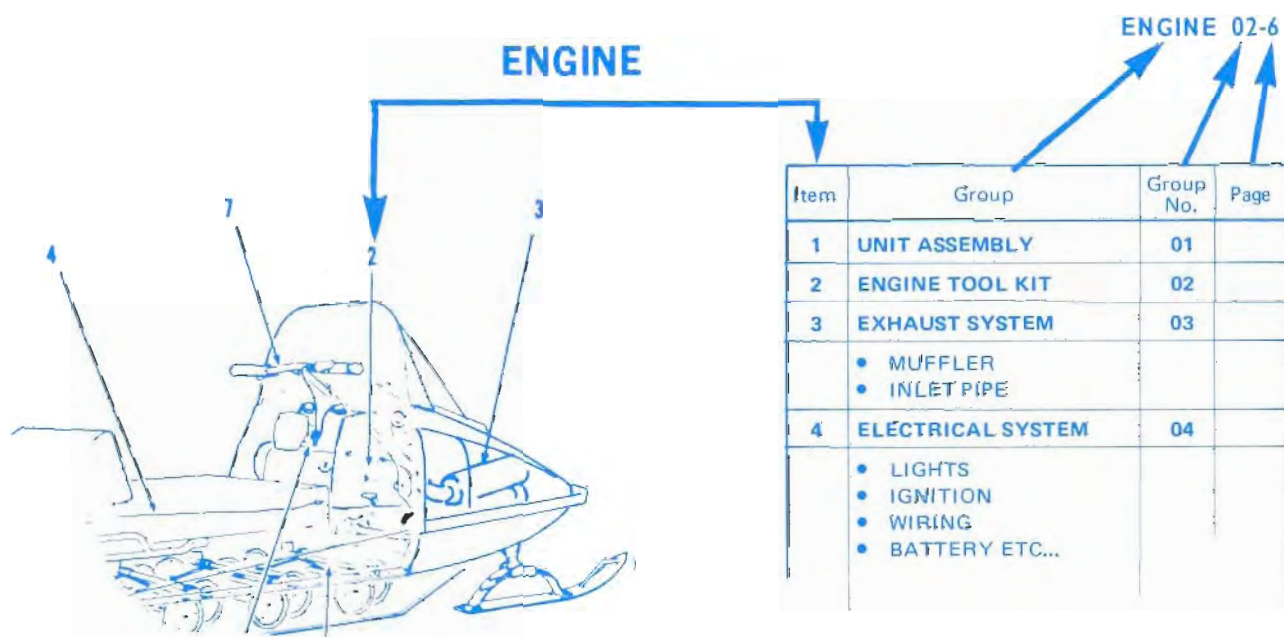
Item	Group	Group No.	Page
1	INDEX	-	1
2	ENGINE TOOL KIT	02	5
3	ENGINE MOUNT	02	6
4	EXHAUST SYSTEM	03	8
	• MUFFLER • MANIFOLD		
5	ELECTRICAL SYSTEM	04	10
	• LIGHTS • IGNITION • WIRING		
6	DRIVE	05	12
	• DRIVE • GUARD PULLEY • CHAIN CASE • DRIVEN PULLEY & BRAKE		
7	SUSPENSION	06	20
	• FRONT & REAR SHAFT • HOUSING - BEARING • SPROCKETS - DRIVE • RUBBER TRACK • SLIDE		
8	SKI	08	24
	• SKI • SPRING • SHOCK ABSORBER		
9	STEERING	09	26
	• STEERING • SUPPORT STEERING		
10	BODY	10	28
	• BODY • SEAT		
11	HOOD	12	32
	• HOOD • WINDSHIELD • ORNAMENTS • STICKERS		
12	FUEL SYSTEM	79	34
	• TANK, FILTER • THROTTLE, ETC.,...		
13	OPTIONAL ITEMS	16	-



# INSTRUCTION

## HOW TO USE THE BOOK

## COMMENT UTILISER LE LIVRE



**COMPONENT PARTS:** Component parts of an assembly are preceded by a dot (•)  
Component Parts of a sub-assembly are preceded by two dots (••) as follows:

### EXAMPLE:

Driven pulley assembly → Assembly

- Shaft - converter
- Plate - converter
- Spring

→ Assembly Components

• Drive cam Assembly → Sub-Assembly

- Drive cam
- Woodruff key

→ Sub-Assembly Components

**COMPOSANTS:** Les composants d'un assemblage sont précédés par un point (•)  
Les composants d'un sous-assemblage sont précédés par deux points (••) comme suit:

### EXEMPLE:

Poulie commandée assemblée → Assemblage

- Moyeu poulie variable
- Plateau variable
- Ressort

→ Composants d'un assemblage

• Came poulie ass. → Sous-Assemblage

- Poulie a came
- Clef

→ Composants d'un sous-assemblage.

### NOTE:

All assembly components can be purchased separately unless mentioned on the illustration concerned.

Tous les composants d'un assemblage peuvent être achetés séparément à moins d'être mentionnés sur l'illustration concernée.

See OLDWILLWAYNE on Ebay for all your manual needs

## MODEL NUMBER-MASTER REFERENCE JULY 1973

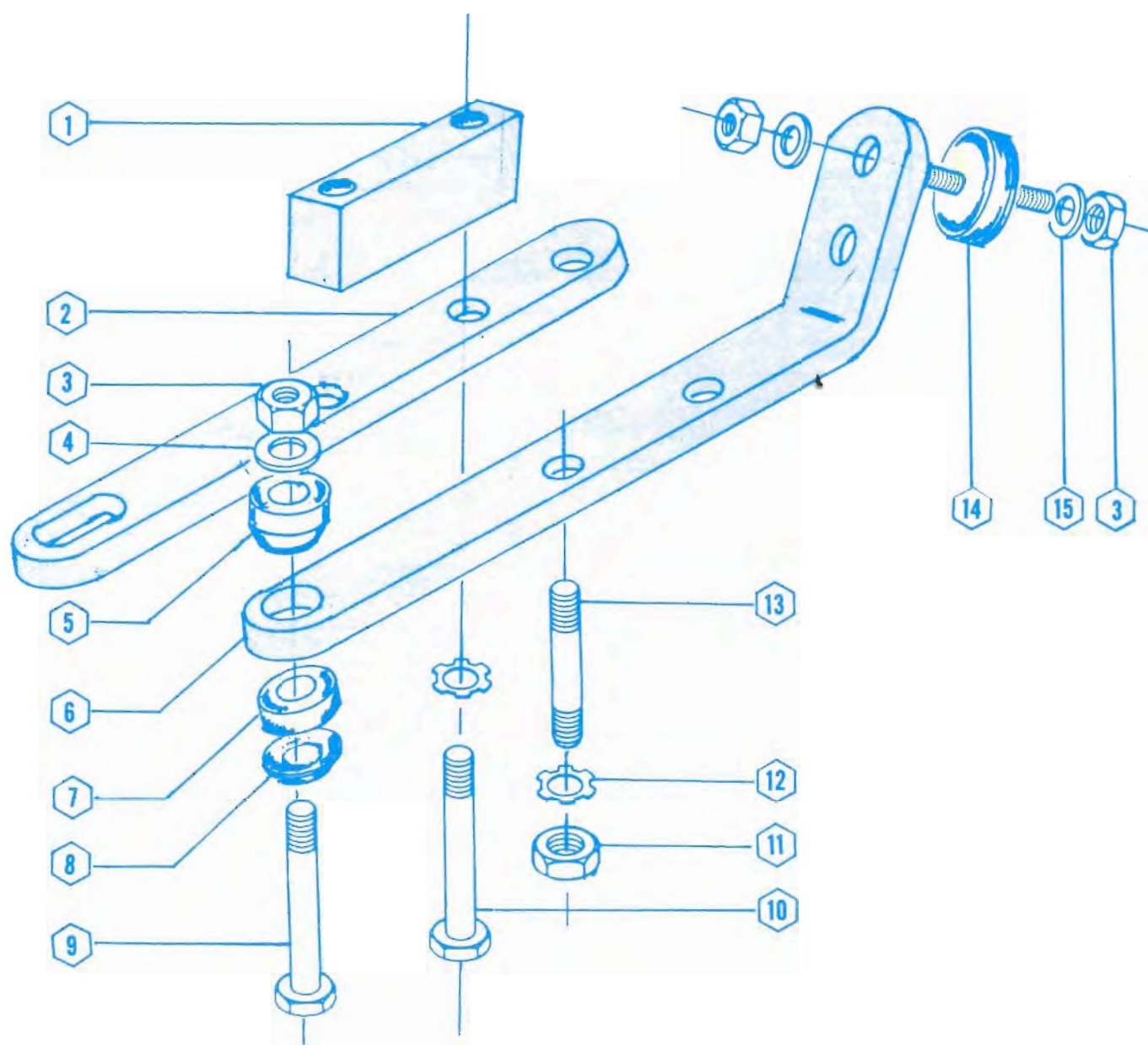
YEAR		NAME		ENGINE SIZE		OPTION		PECULIARITY		FEATURE		ENGINE MAKE & RATING		SUSPENSION	
	1	Star Jet	1	295cc x 1 cyl.	1	Manual Start	1	0	No peculiarity	1	No feature	1	Yamaha Regular	1	Bogie
	2	SST	2		2	Electric Start	2	1		2	Ring gear installed	2	Yamaha Sport	2	Multiflex
1973	3	Whisper Jet	3	340cc x 2 cyl.	3		3	2		3	Free air	3	Yamaha Racing	3	Thunder Jet Susp.
1974	4	Thunder Jet	4	440cc x 2 cyl.	4		4	3		4		4	Hirth Regular	4	
	5	Strato Jet	5		5		5	4		5		5		5	
	6	Astro Jet	6	650cc x 2 cyl.	6		6	5		6		6		6	
	7	Astro SS	7		7		7	6		7		7		7	
	8	Sabre Jet	8		8		8	7		8		8		8	

See OLDWILLWAYNE on Ebay for all your manual needs

[illegible]



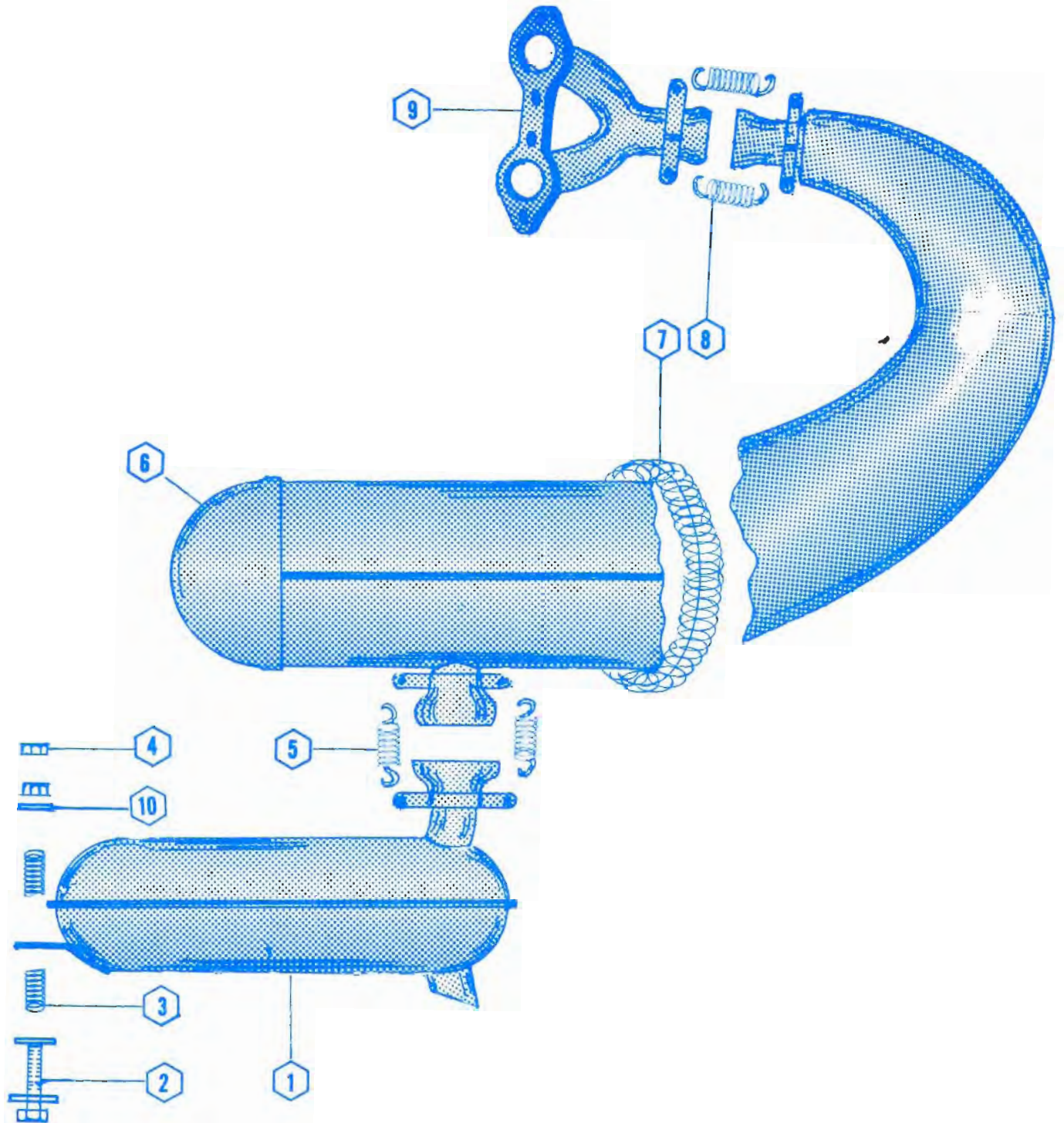
## ENGINE MOUNT



[illegible]



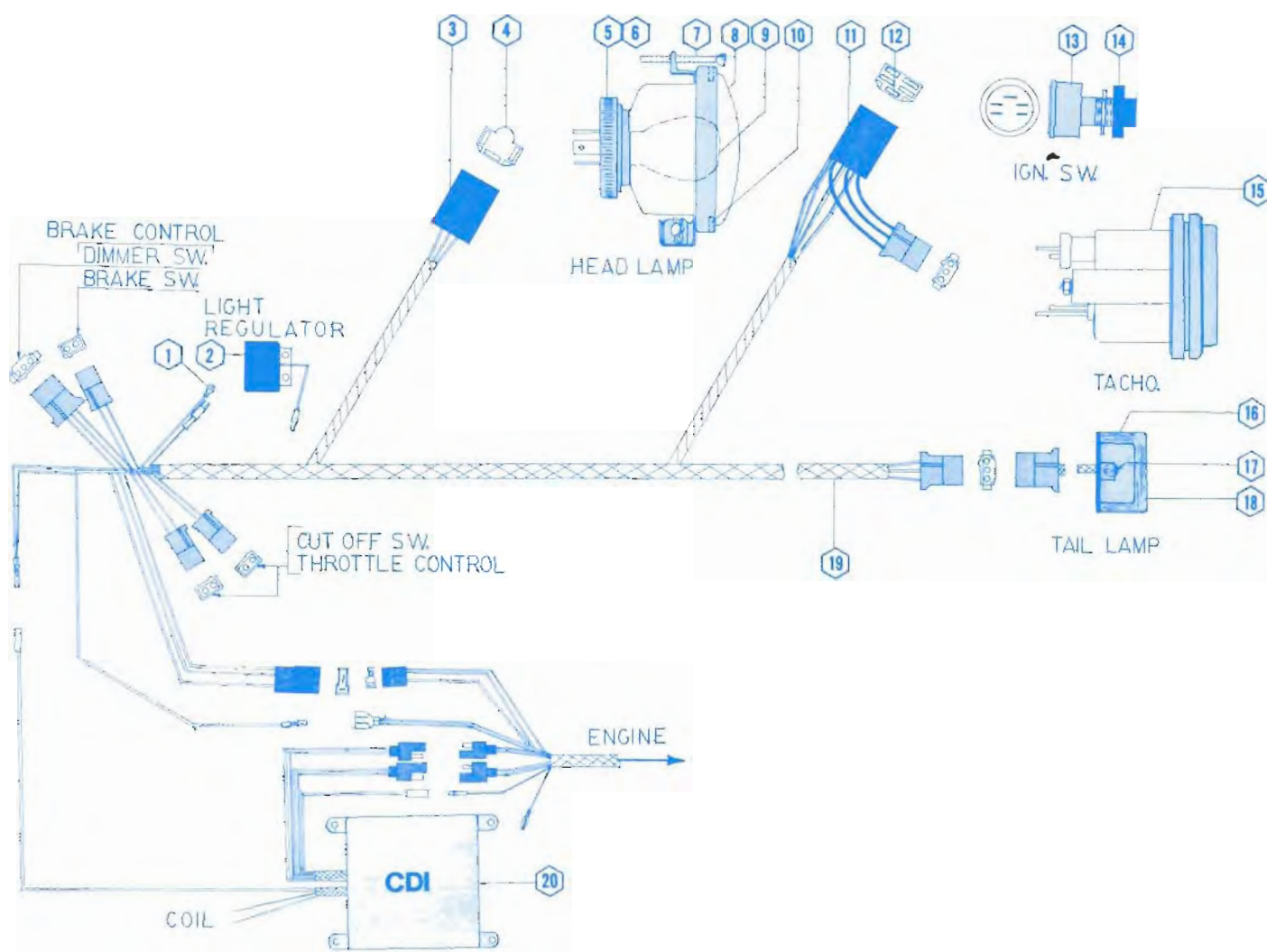
## EXHAUST SYSTEM







# ELECTRIC SYSTEM

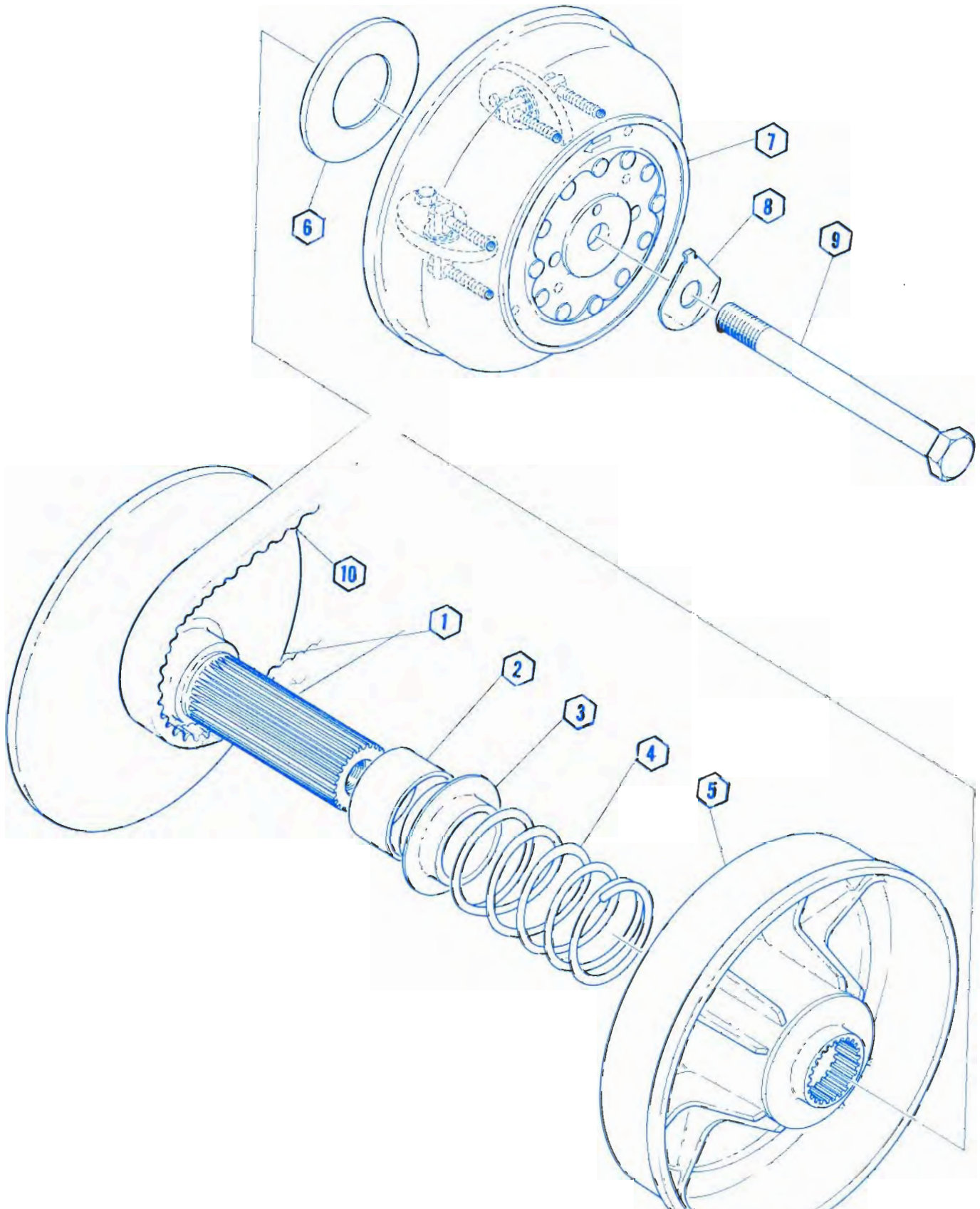




4.4313.320

4.4313.320

## DRIVE

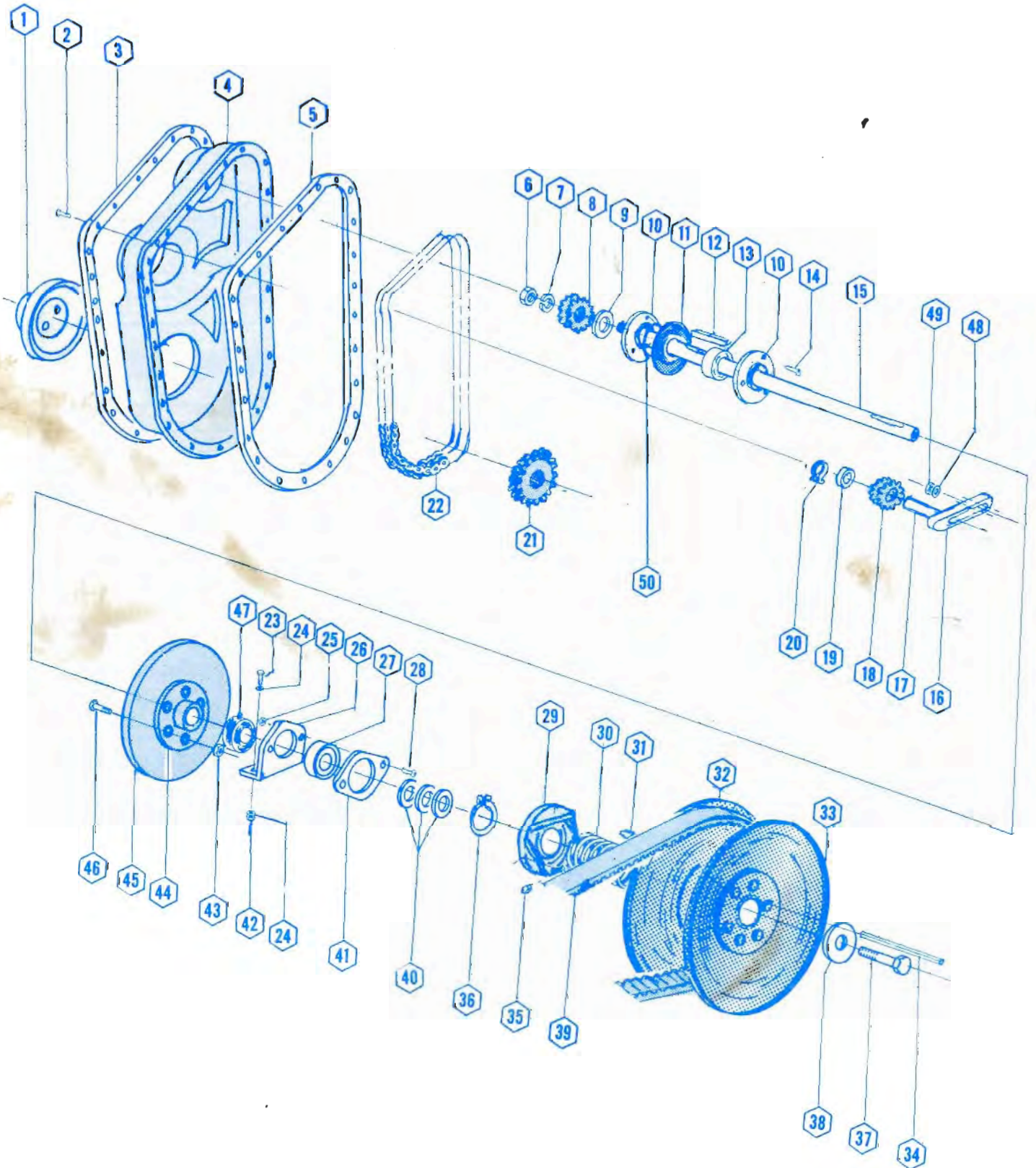




## DRIVE

[illegible]

## CONVERTER/CHAIN CASE



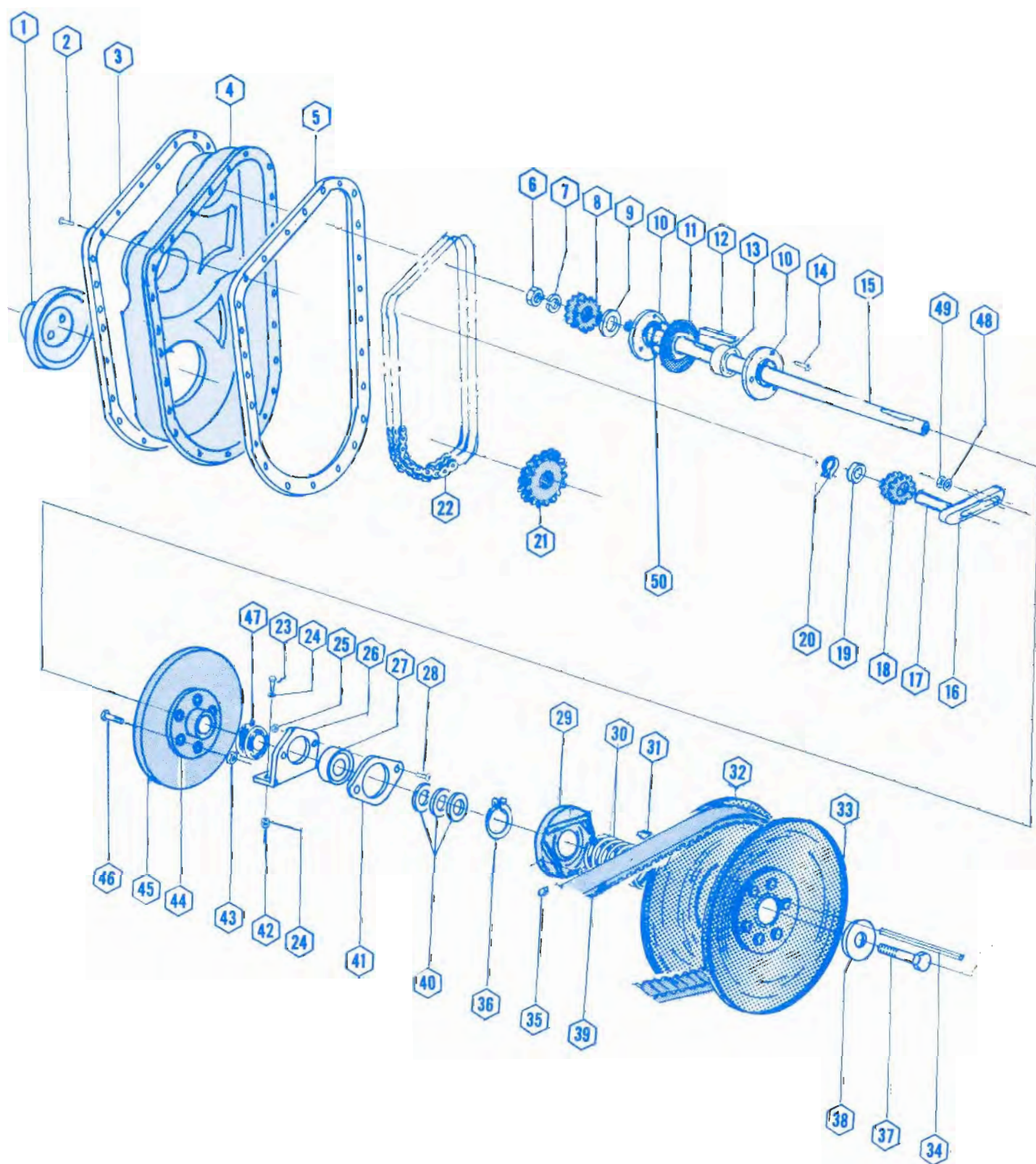


# CONVERTER/CHAIN CASE

4.4313.320

NO.	Jno. JET	DESCRIPTION	QTY.
1	181231	Plug Cover	1
2	181838	Screw 18 1838	11
3	181804	Retainer Cover	1
4	181202	Chain Cover	1
5	181237	Gasket Cover	1
6	912605	Nut	1
7	912877	Lock Washer	1
8	050063	Sprocket 16 T.	1
8	050039	Sprocket 17 T.	1
8	050403	Sprocket 18 T.	1
9	181571	Washer Thrust	1
10	770007	Flangette	2
11	181273	Gasket Flangette	1
12	917001	Key Brake	1
13	770009	Bearing	1
14	910104	Cap Screw	3
15	181842	Shaft Converter	1
16	181806	Bracket Idler	1
17	181836	Shaft Idler	1
18	050447	Sprocket 11 T. (Idler Chain)	1
19	770008	Bearing	1
20	916751	Retaining Ring	1
21	050064	Sprocket 37 T.	1
22	181101	Chain 68 Pitch	1
23	910243	Cap Screw	2
24	912831	Washer	5
25	912725	Nut	5
26	181540	Pillow Block	1
27	770005	Bearing	1
28	914320	Carriage Bolt	2
-	181277	Assembly Converter 050703	1
29	181744	• Torque Bracket (35°)	1
29	181747	Torque Bracket (32°) Optional	1
30	181742	• Spring	1
31	181743	• Key	1
32	181739	• Movable Face	1
33	181738	• Face & Hub	1
34	181746	• Key	1
35	181741	• Slipper Cam	3
36	181745	• Retaining Ring	1
37	916475	Cap Screw	1
38	050223	Washer Special	1

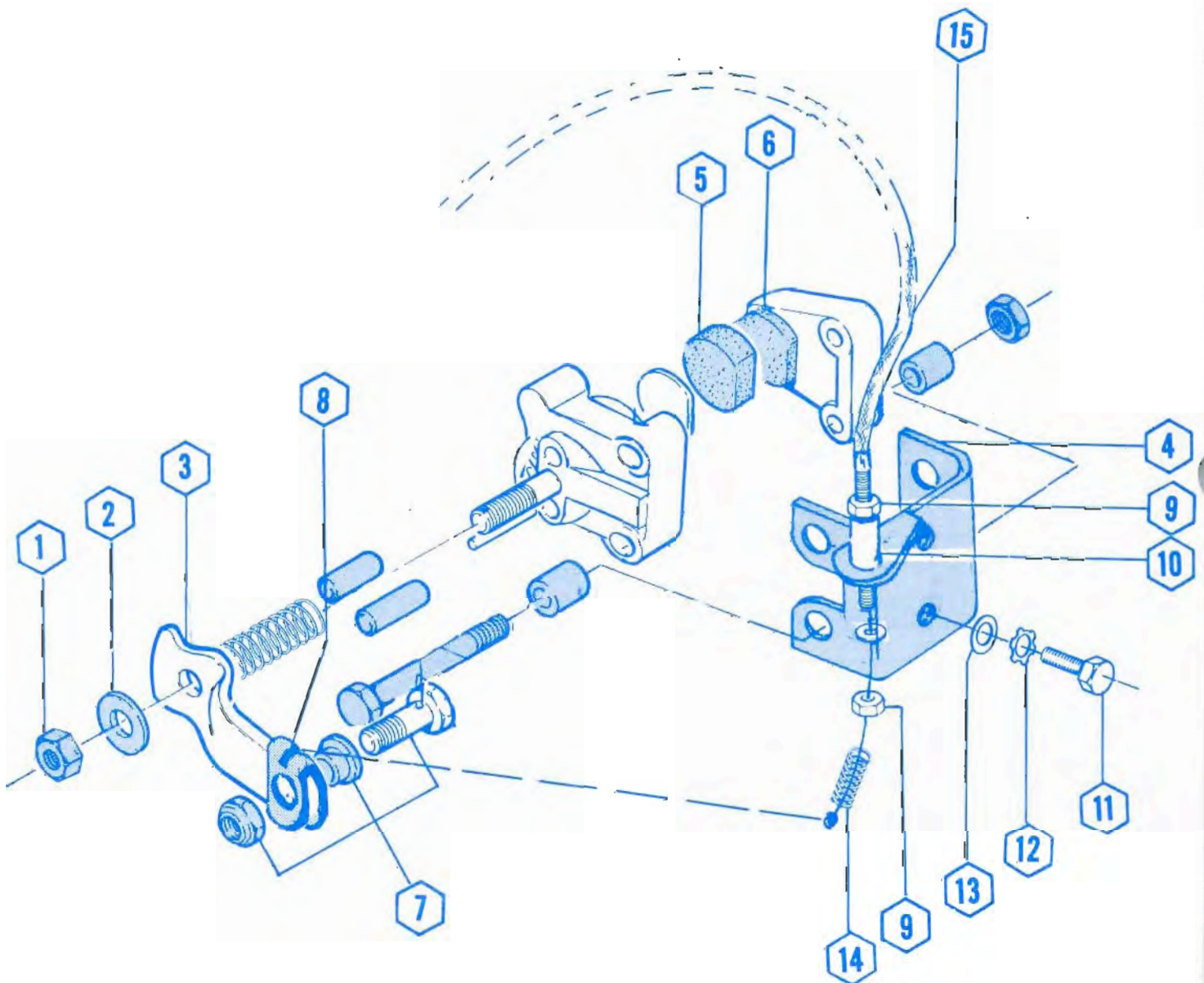
## CONVERTER/CHAIN CASE







## BRAKE

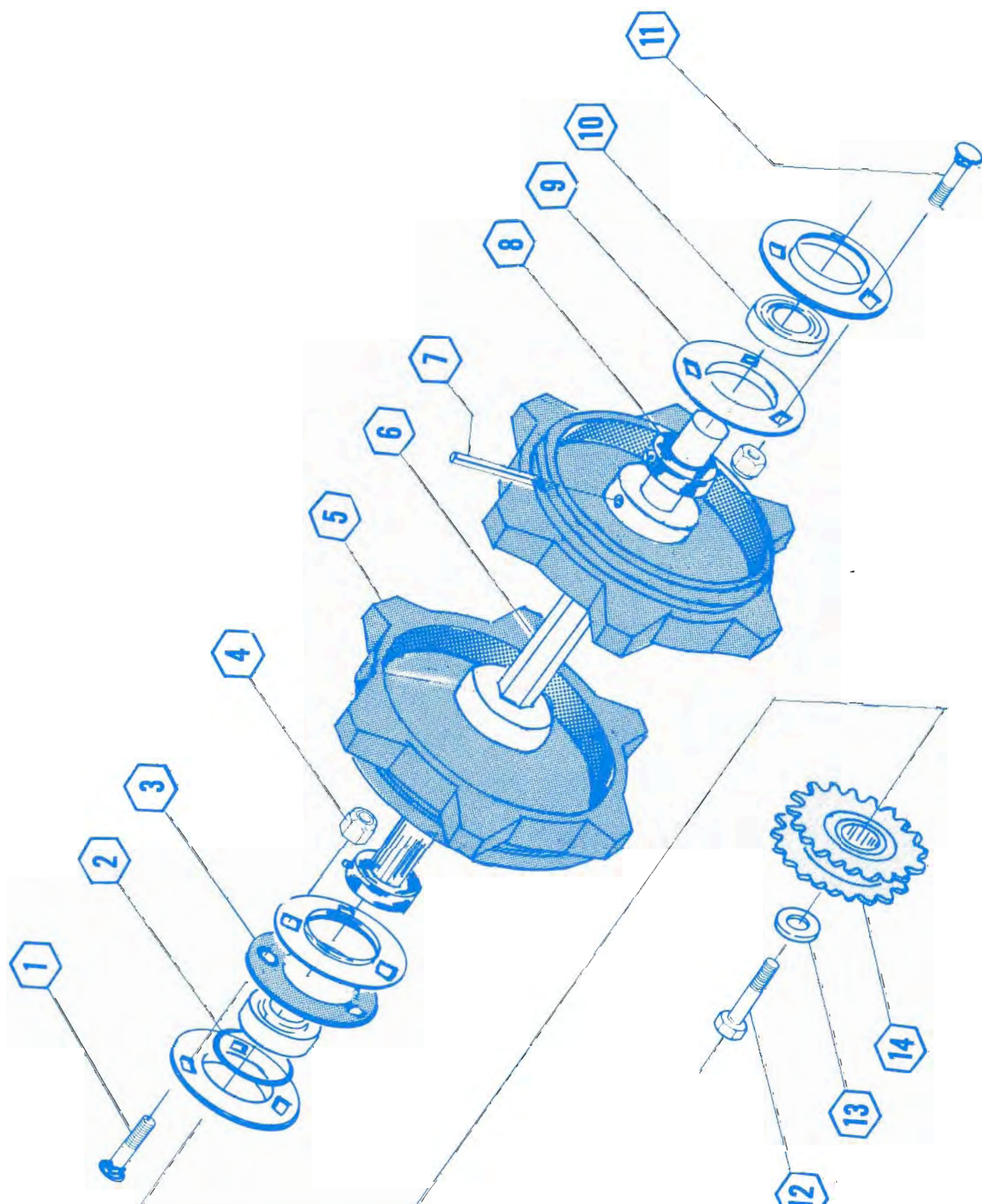




## BRAKE

[illegible]

## FRONT SHAFT

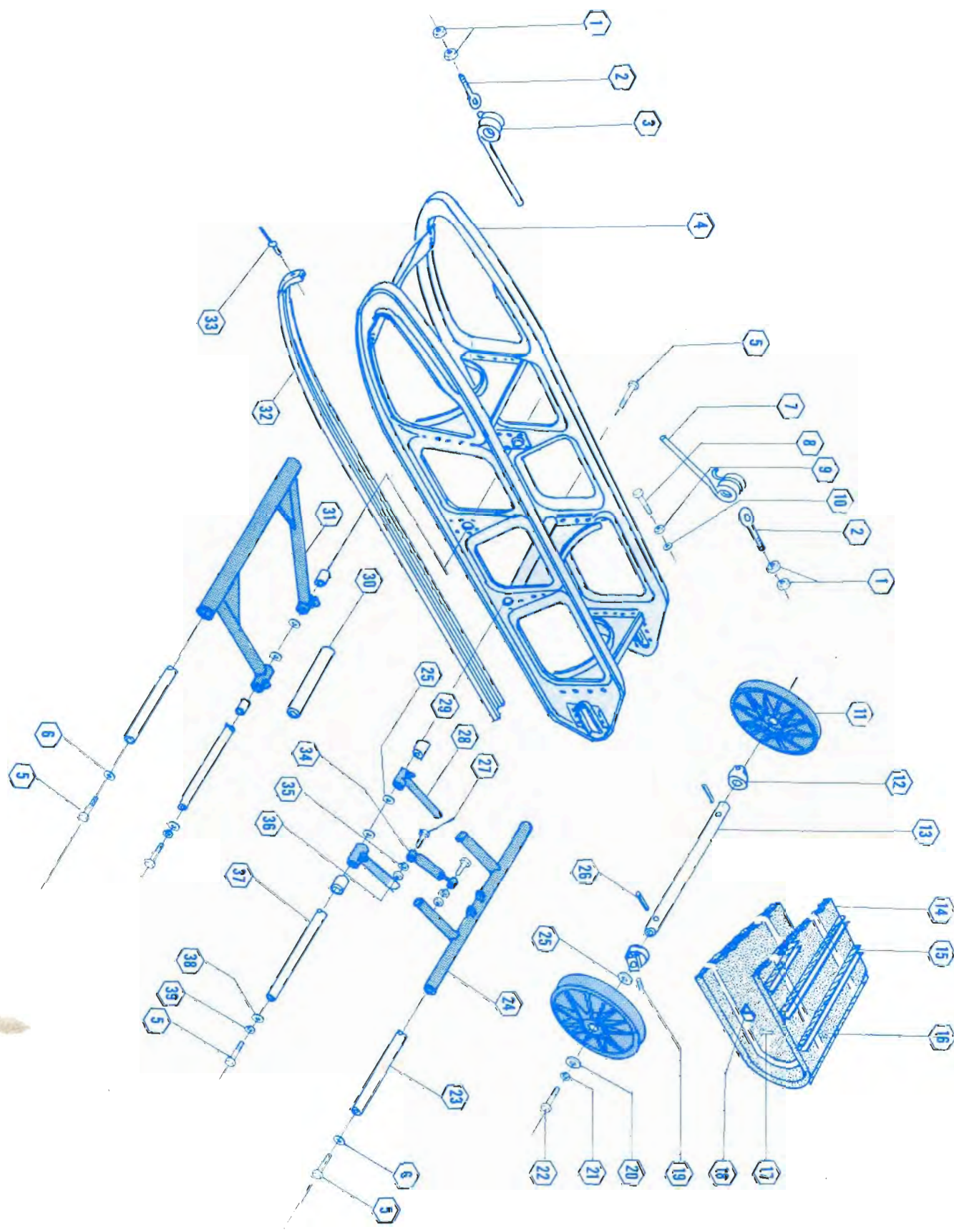




## FRONT SHAFT

[illegible]

## SUSPENSION



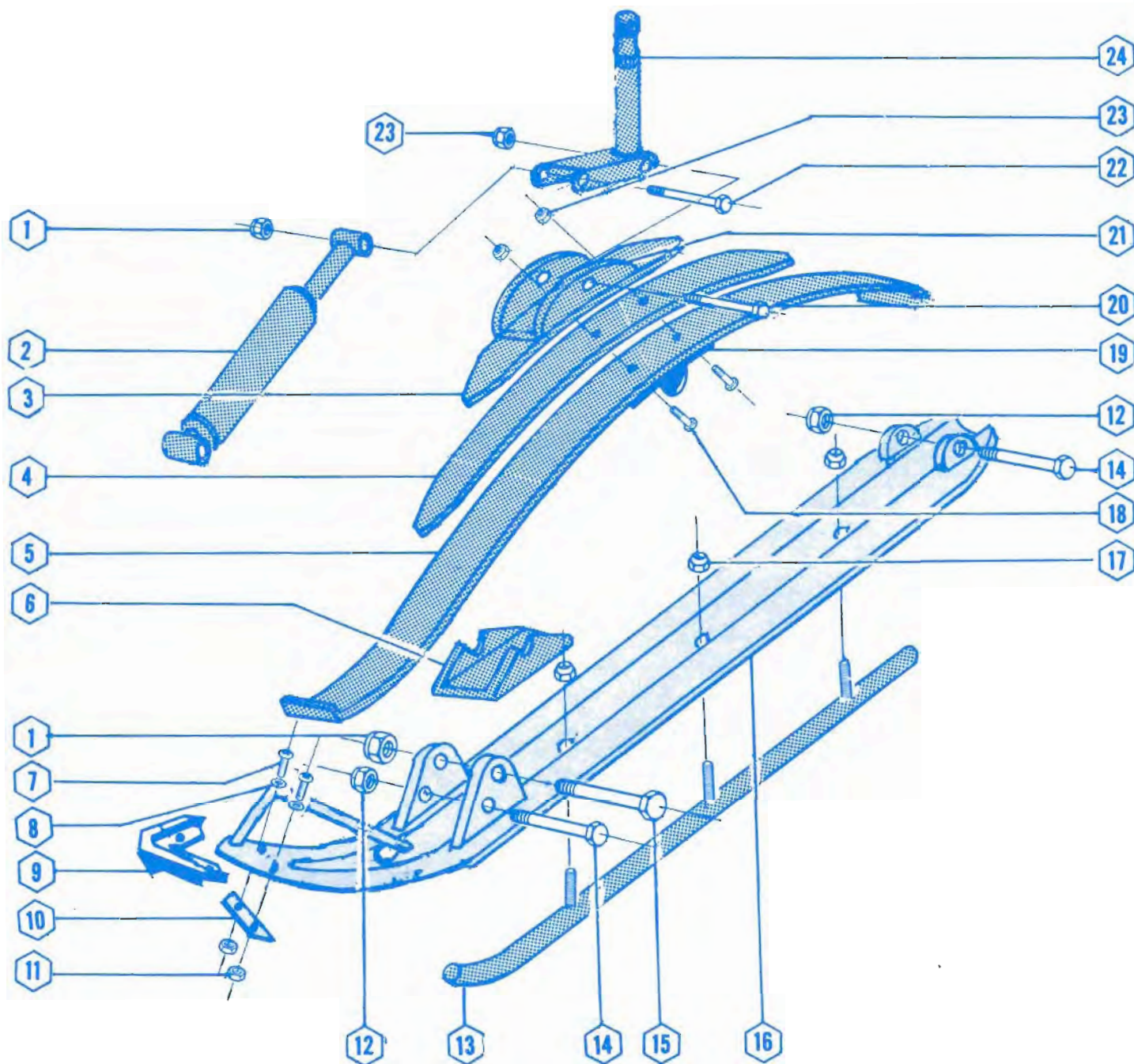


4.4313.320

# SUSPENSION

NO.	Ino'let	DESCRIPTION	QTY.
1	914357	Hex. Nut	8
2	181447	Eye Bolt	4
3	181436	Spring L.H. Front	1
3	181437	Spring R.H. Front	1
4	181821	Main Frame	1
5	916475	Cap Screw	8
6	912831	Washer	4
7	181438	Spring R.H. Rear	1
7	181439	Spring L.H. Rear	1
8	181451	Bolt	2
9	912663	Jam Nut	2
10	912832	Washer	2
11	181449	Idler Wheel	2
12	181450	Axle Holder	2
13	181442	Idler Axle	1
14	181880	Track Assembly	1
15	060293	• Cleat	36
16	181657	• Nut	48
17	181656	• Bolt	48
18	060292	• Guide Track	24
—	181999	• Rivet	312
19	181455	Set Screw	2
20	181445	Retainer Washer	2
21	912873	Lock Washer	2
22	910104	Cap Screw	2
23	181432	Carrier Shaft	2
24	181466	Outer Tele Tube	1
25	181444	Washer Thrust	6
26	181456	Roll Pin	2
27	910351	Cap Screw	2
28	181464	Inner Tele Tube R.H.	1
28	181465	Inner Tele Tube L.H.	1
29	181430	Bushing	4
30	181443	Spacer Bushing	1
31	181160	Front Control Arm	1
32	181446	Hifax Runner	2
33	916674	Rivet	32
34	181535	Shock Absorber	1
35	912875	Lock Washer	2
36	912603	Hex. Nut	2
37	181431	Axle	2
38	181559	Washer Special	4
39	912874	Lock Washer	4

# SKI



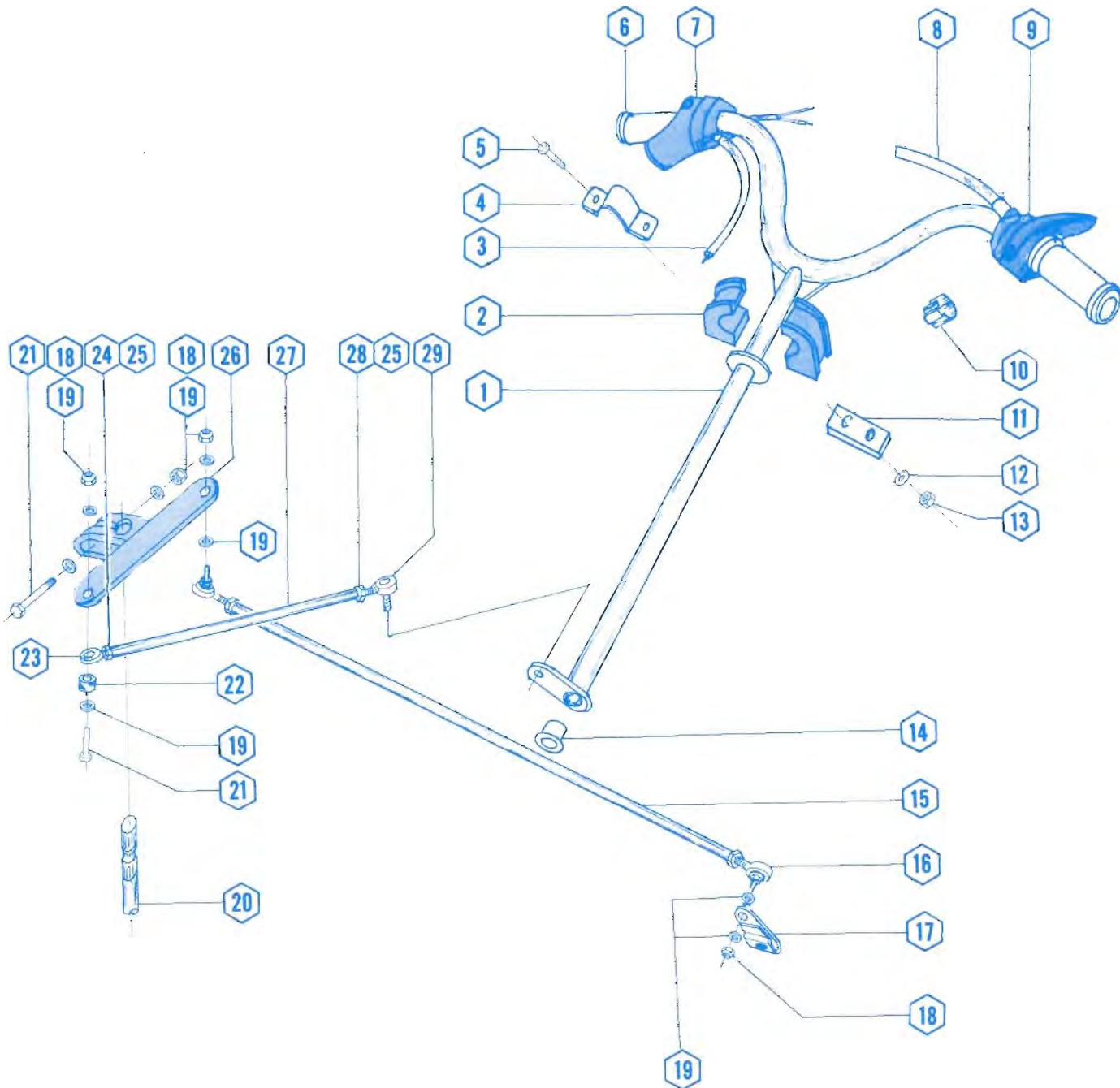


4.4313.320

## SKI 08-25

SKI 08-25

STEERING

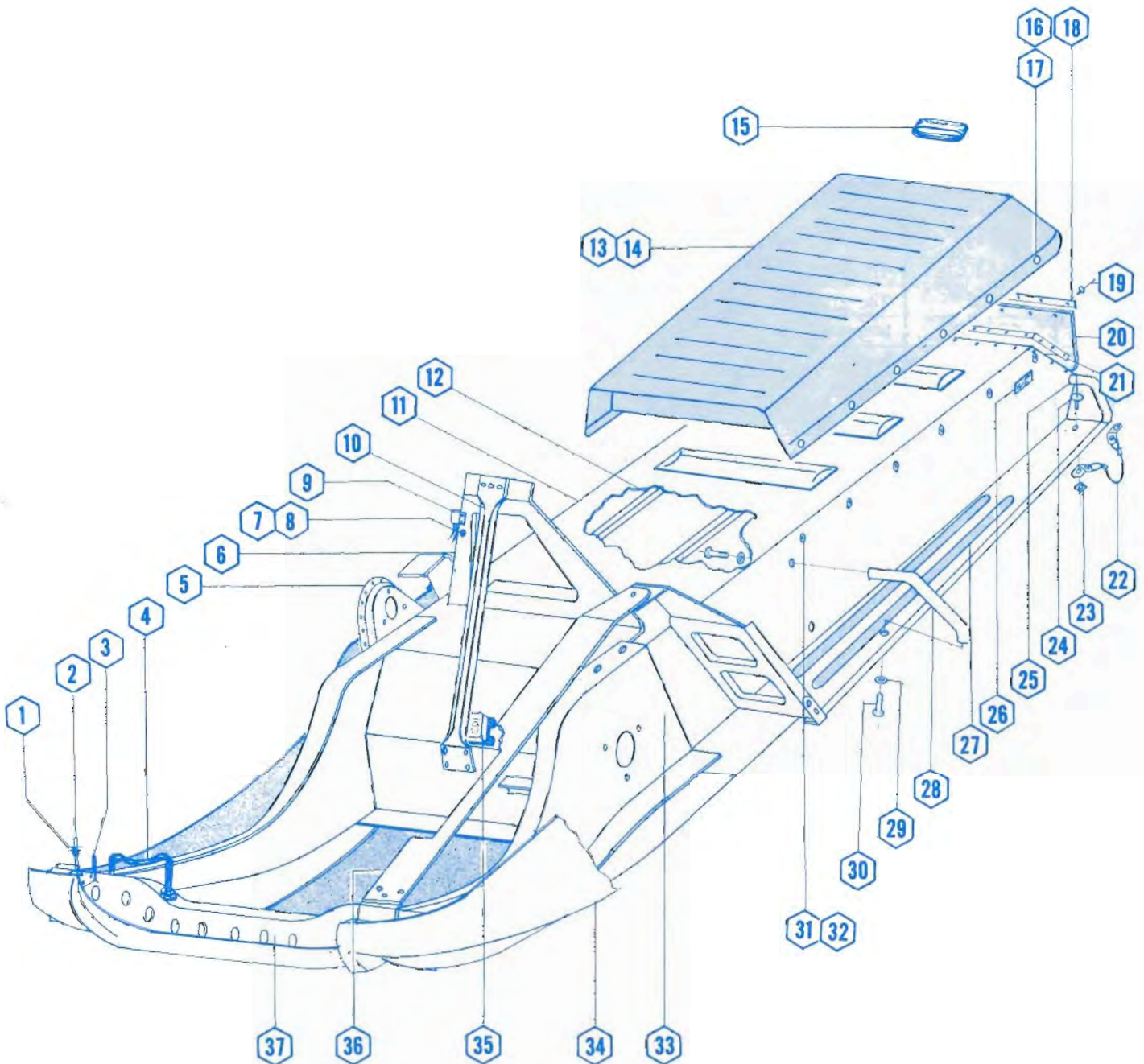




4.4313.320

[illegible]

## BODY & SEAT



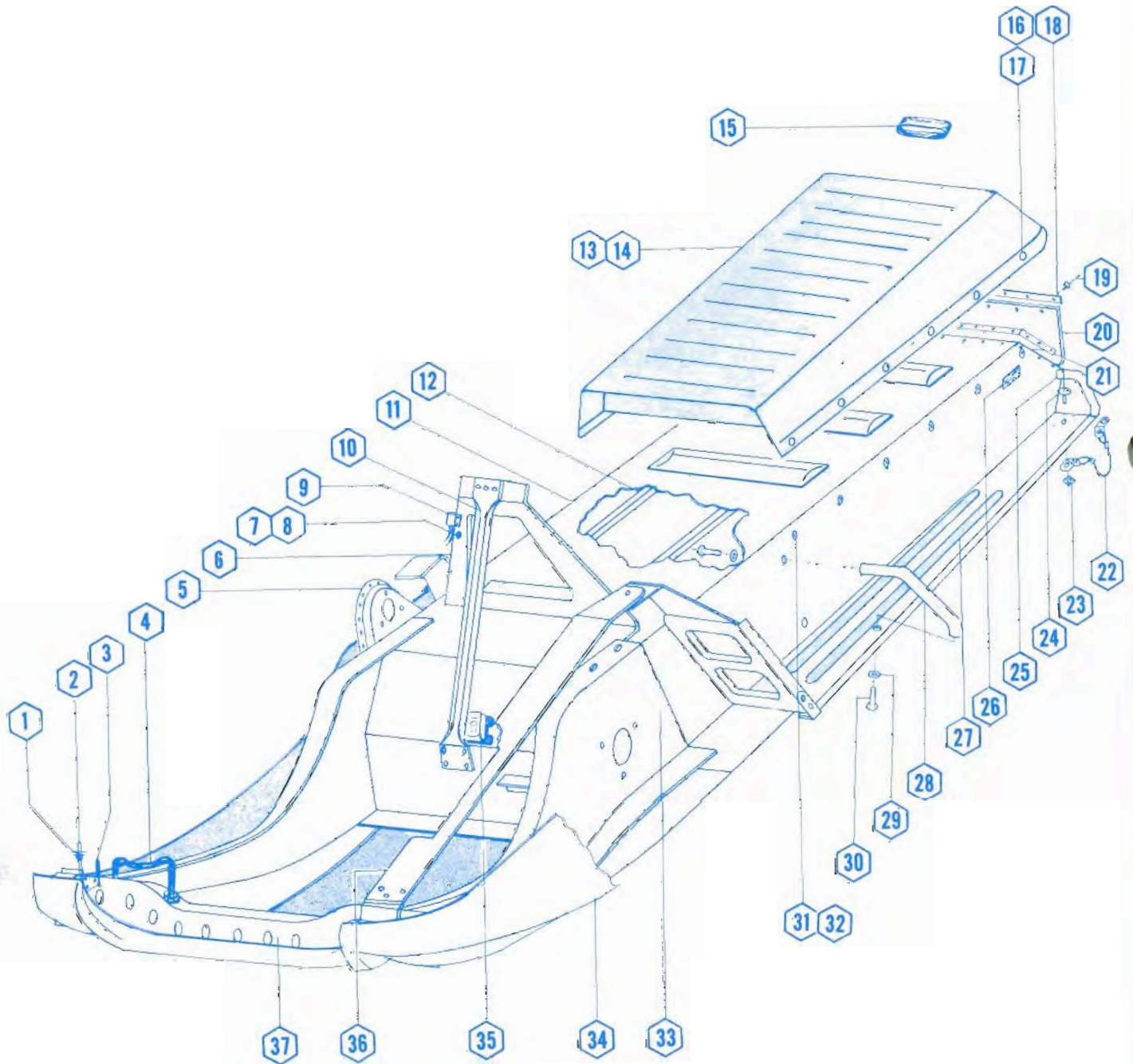


# BODY & SEAT

4.43/3.320

NO.	JANET	DESCRIPTION	QTY.
1	181893	Spring	2
2	181926	Hood Pin R.H.	1
2	181927	Hood Pin L.H.	1
—	916407	Rivet (Hood Pin)	6
3	181929	Stopper Steering	1
—	912831	Washer (Stopper Steering)	1
—	912740	Nut (Stopper Steering)	1
4	181921	Muffler Support 18921	1
—	912724	Nut (Ret. Muffler Support)	2
—	<del>914355</del>	Hex. Nut (Ret. Muffler Support) 916520	2
—	912829	Washer (Ret. Muffler Support)	4
5	181530	Backing Plate (Chain Case)	1
—	913198	Bolt (Backing Plate)	7
—	912829	Washer (Backing Plate)	7
—	913738	Nut (Backing Plate)	7
6	181802	Steering Stanchion	1
—	181672	Rivet (Same Steering Brace)	9
7	020269	Half Guide Rope	2
8	916797	Retaining Ring	1
9	040530	Regulator	1
—	120564	Spacer (Regulator)	1
—	<del>916796</del>	Machine Screw (Ret. Regulator) 914085	2
—	916535	Shack Washer (Ret. Regulator)	2
—	916521	Hex. Nut (Ret. Regulator)	2
10	<del>181476</del>	Steering Brace 050403	1
—	181672	Rivet (Steering Brace)	9
11	181824	Frame	1
12	181650	Wear Strip	2
—	916674	Rivet (Wear Strip)	18
13	181858	Seat	1
14	181827	Seat Cover	1
15	181907	Tail Light	1
16	916734	Snap	16
17	916735	Snap Button	16
18	181538	Backing Plate	1
19	916419	Rivet	5
20	181818	Mud Flap	1
21	181199	Tunnel Rear	1
—	916407	Rivet (Tunnel Rear)	18
22	181848	Lanyard Mud Flap	2
23	916525	Square Washer	4
24	916744	Rivet Lanyard	4
25	181488	Lift Handle L.H. Rear	1
25	181489	Lift Handle R.H. Rear	1
26	<del>420318</del>	Reflector Bed 120828	2

## BODY & SEAT

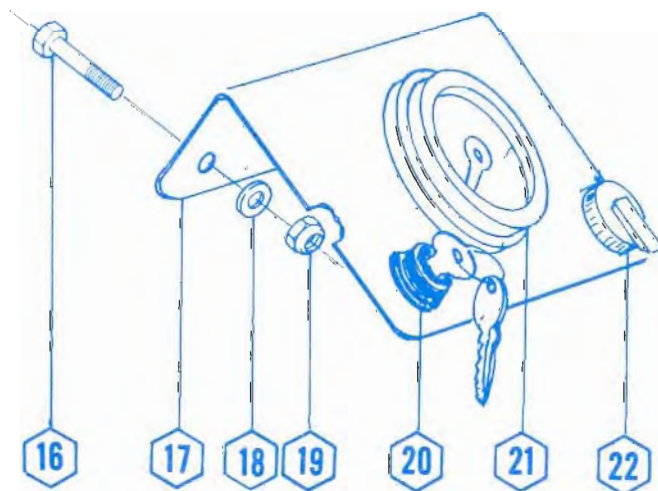
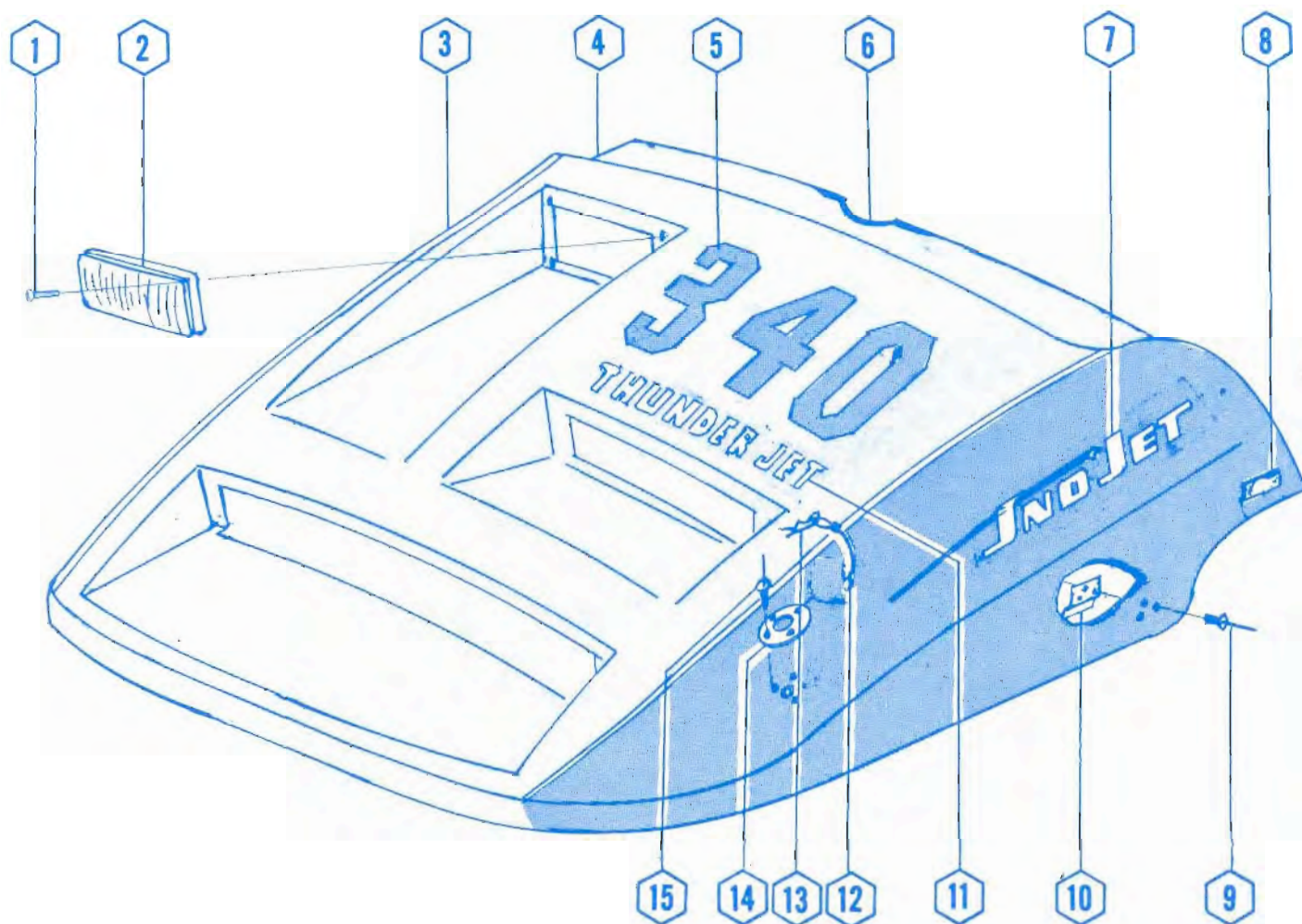




## BODY & SEAT

[illegible]

## HOOD & DASH

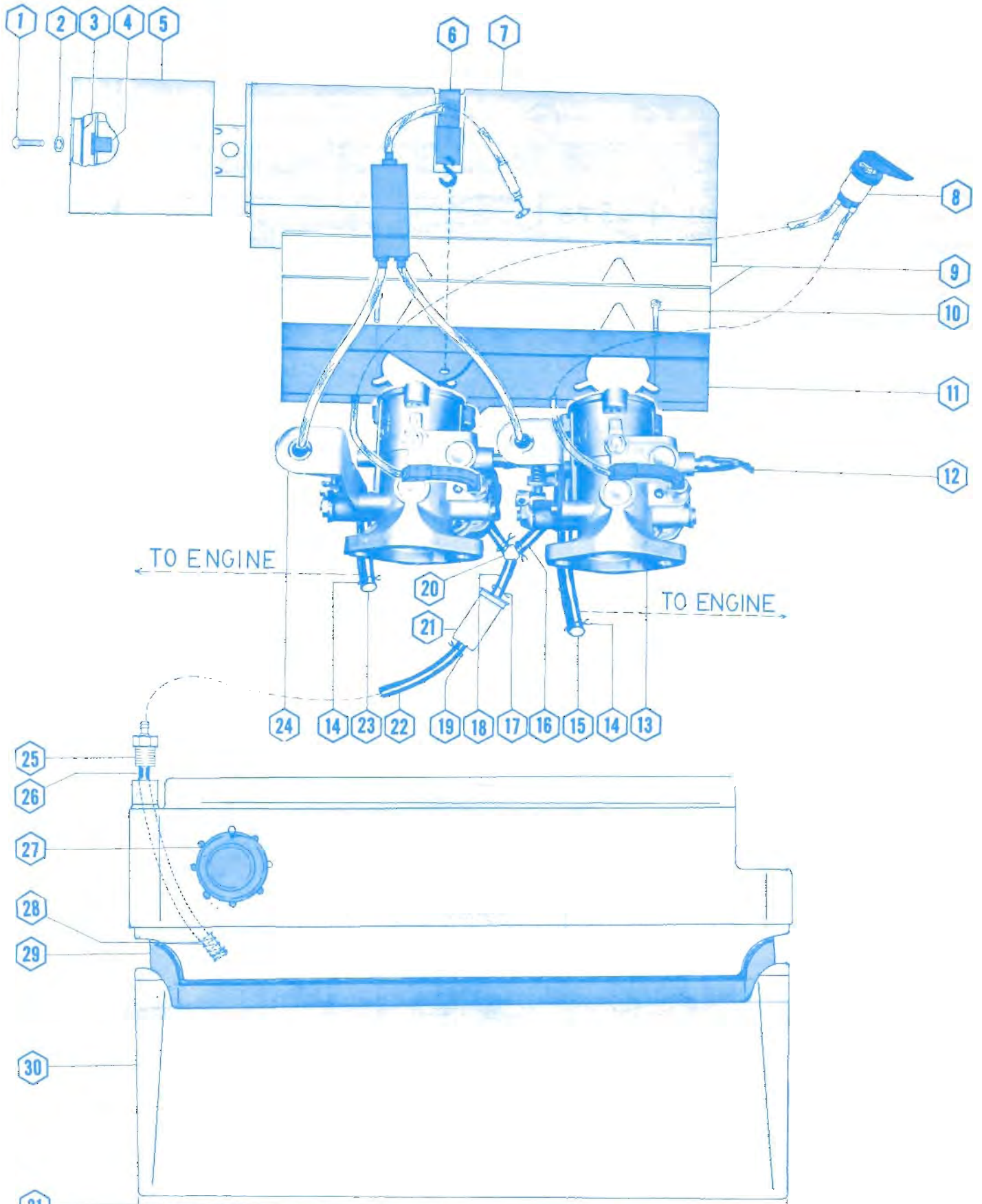




## HOOD & DASH

[illegible]

# FUEL SYSTEM





## FUEL SYSTEM

[illegible]